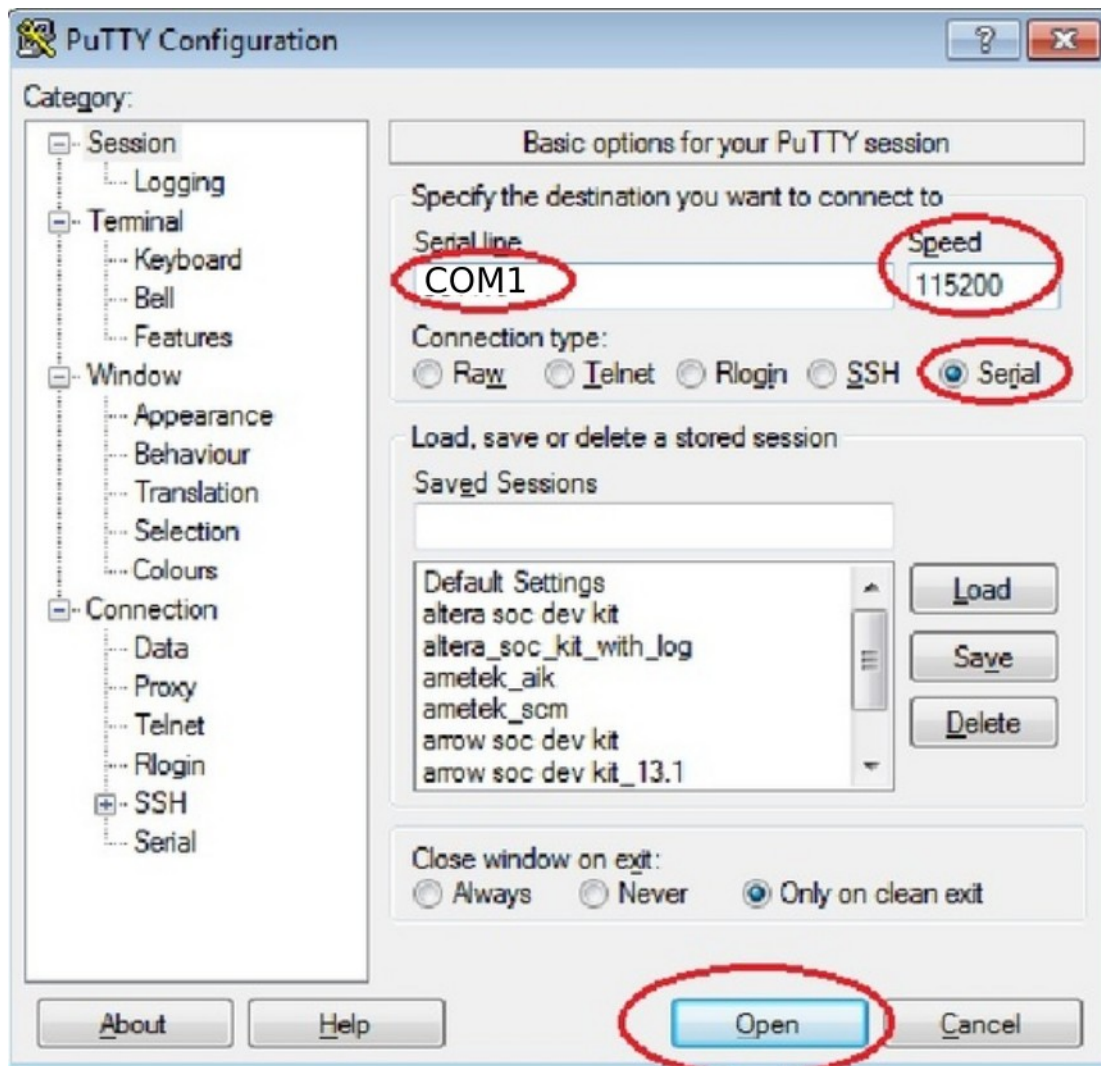


15-348 Embedded Systems
Fall 2019

How to use putty to connect to your board using serial

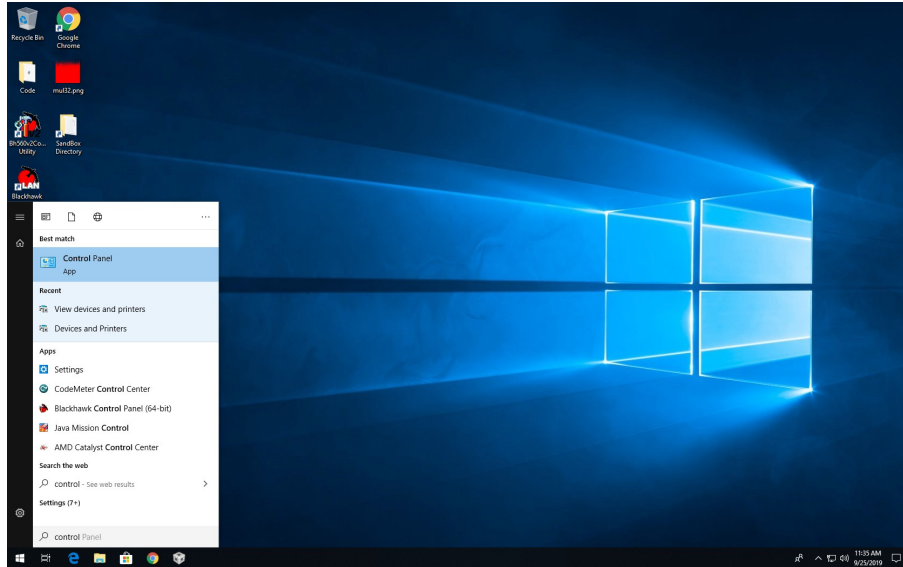
- Open putty and choose serial connection, set the speed to 115200, and leave the serial line field with its default value



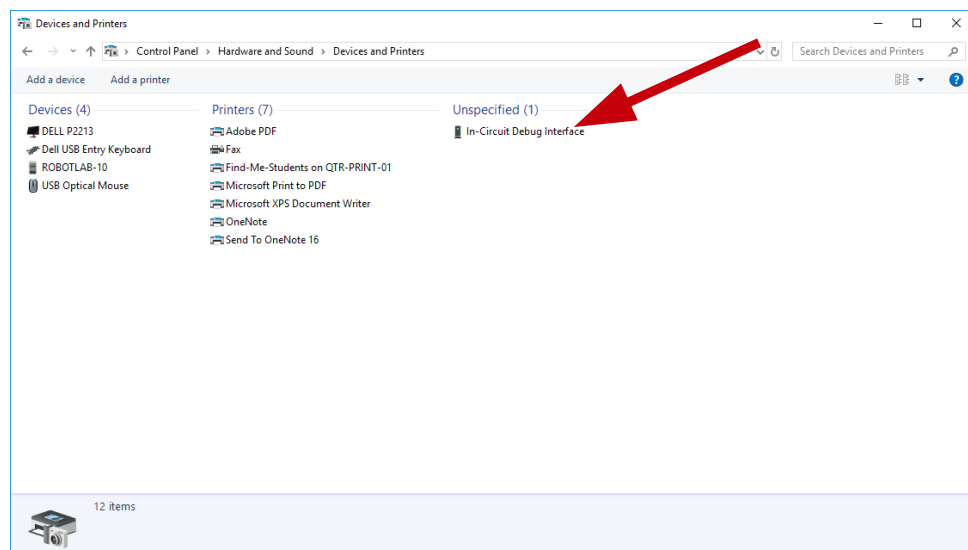
If the above step doesn't work, we proceed to check the COM port that the PC is using to communicate with the board.

Note: The following instructions are for Windows PCs only.

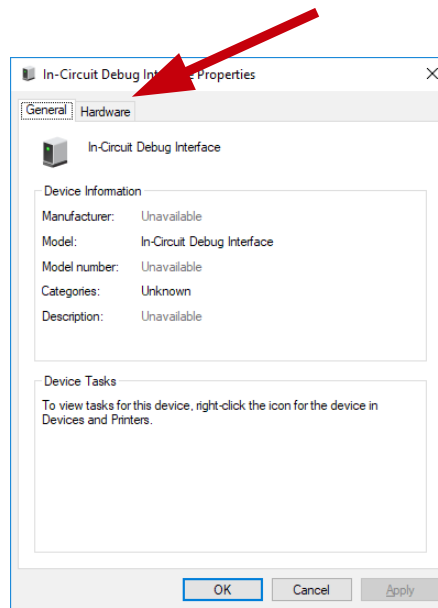
- Open Control Panel



- Go to Hardware and Sound – Devices and Printers and click In-Circuit Debug Interface



- Go to the “hardware” tab



- The id of the COM port (e.g., COM1, COM4, ...) is specified in the table. Copy this value to the “Serial line” field in Putty (first step above).

