

# CS15-319 / 15-619

# Cloud Computing

Recitation 3

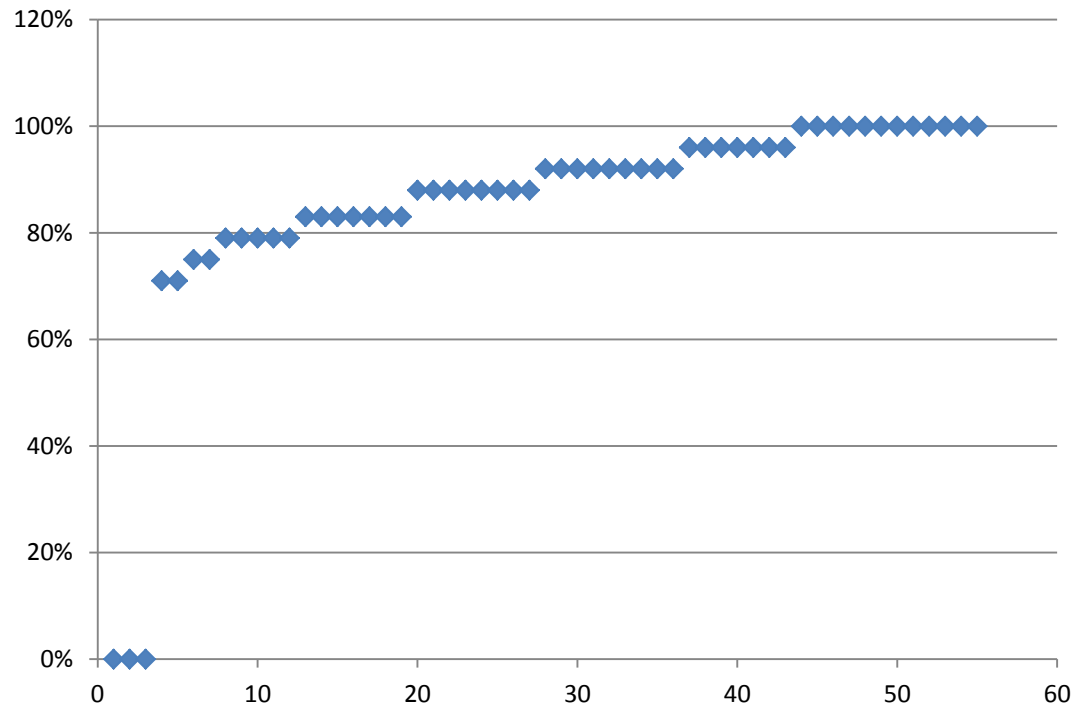
January 29<sup>th</sup>, 2013

# Bugs!

- The course organization still looks a little weird
  - The OLI team needs more time!
- Checkpoint 1 grading
  - Bug in question 16. We will manually give credit.
- Encounter a general bug:
  - Post on Piazza
- Encounter a grading bug:
  - Post Privately on Piazza

# UNIT 1: Checkpoint Quiz 1

- Stats
  - 52/55 completed the Quiz
  - Average is 85% (55 St.) or 90% (52 St.)
  - Distribution is:



# Unit 2: Data Centers

- Start reading first 2 modules:
  - Module 3: Data Center Trends
  - Module 4: Data Center Components
  - Module 5: Design Considerations
  - Unit 2: Checkpoint Quiz

Cloud Computing		
Assignment		Status
<u>UNIT 1: Introduction to Cloud Computing</u>		
<u>Module 1: Introduction to Cloud Computing</u> ( <a href="#">Gradebook</a> ) ( <a href="#">Learning Dashboard</a> )		
<u>Module 2: Building Blocks and Service Models</u> ( <a href="#">Gradebook</a> ) ( <a href="#">Learning Dashboard</a> )		
Quiz 1: Introduction to Cloud Computing	<a href="#">Checkpoint</a>	<a href="#">Ended 1/27/13 11:59 PM</a>
<u>UNIT 2: Data Centers</u>		
<u>Module 3: Data Center Trends</u> ( <a href="#">Gradebook</a> ) ( <a href="#">Learning Dashboard</a> )		
<u>Module 4: Data Center Components</u> ( <a href="#">Gradebook</a> ) ( <a href="#">Learning Dashboard</a> )		



# Amazon Web Services (AWS) Account

- **ALL STUDENTS:**

Please click the link from the AWS email invitation to confirm the consolidated billing. It was sent to whatever email address you used to sign up for AWS. If you did not receive the link, let me Jason Boles ([jboles@cmu](mailto:jboles@cmu)) know.

The subject of the email is:

**Request to add account to Consolidated Bill**

# Project 1 Student Progress

- Working with AWS:
  - EC2 Provisioning: 53 responses
  - EC2 Performance : 52 responses
  - Amazon S3: 50 responses
- Running MapReduce on the Cloud:
  - Elastic MapReduce: 16 responses
  - Apache Whirr: 9 responses
  - Email Analysis, Sequential: 0 responses
  - Email Analysis, MapReduce: 1 response
  - Email Analysis Bonus: 0 responses

# Student Questions on OLI

- The relationship between Cloud Computing and Distributed Systems.
  - The underlying technologies for clouds are large-scale distributed computing systems with resource sharing
- Why do we need a private cloud?
  - Security considerations
  - Organization policies/compliance
- Different kinds of virtualization technologies. Like XEN, OpenVZ, KVM and Amazon/IBM cloud computing solutions.
  - Case studies in Unit 3

# Discussions

- Your questions...



# Upcoming Deadlines

Elastic MapReduce	<a href="#">Checkpoint</a>	<b><u>Available Now</u></b> <u>Due 2/3/13 11:59 PM</u>
Apache Whirr	<a href="#">Checkpoint</a>	<b><u>Available Now</u></b> <u>Due 2/3/13 11:59 PM</u>
Email Analysis : Sequential	<a href="#">Checkpoint</a>	<b><u>Available Now</u></b> <u>Due 2/10/13 11:59 PM</u>
Email Analysis : MapReduce	<a href="#">Checkpoint</a>	<b><u>Available Now</u></b> <u>Due 2/10/13 11:59 PM</u>
Email Analysis : Bonus	<a href="#">Checkpoint</a>	<b><u>Available Now</u></b> <u>Due 2/10/13 11:59 PM</u>

