

# Database Applications (15-415)

## The Relational Model

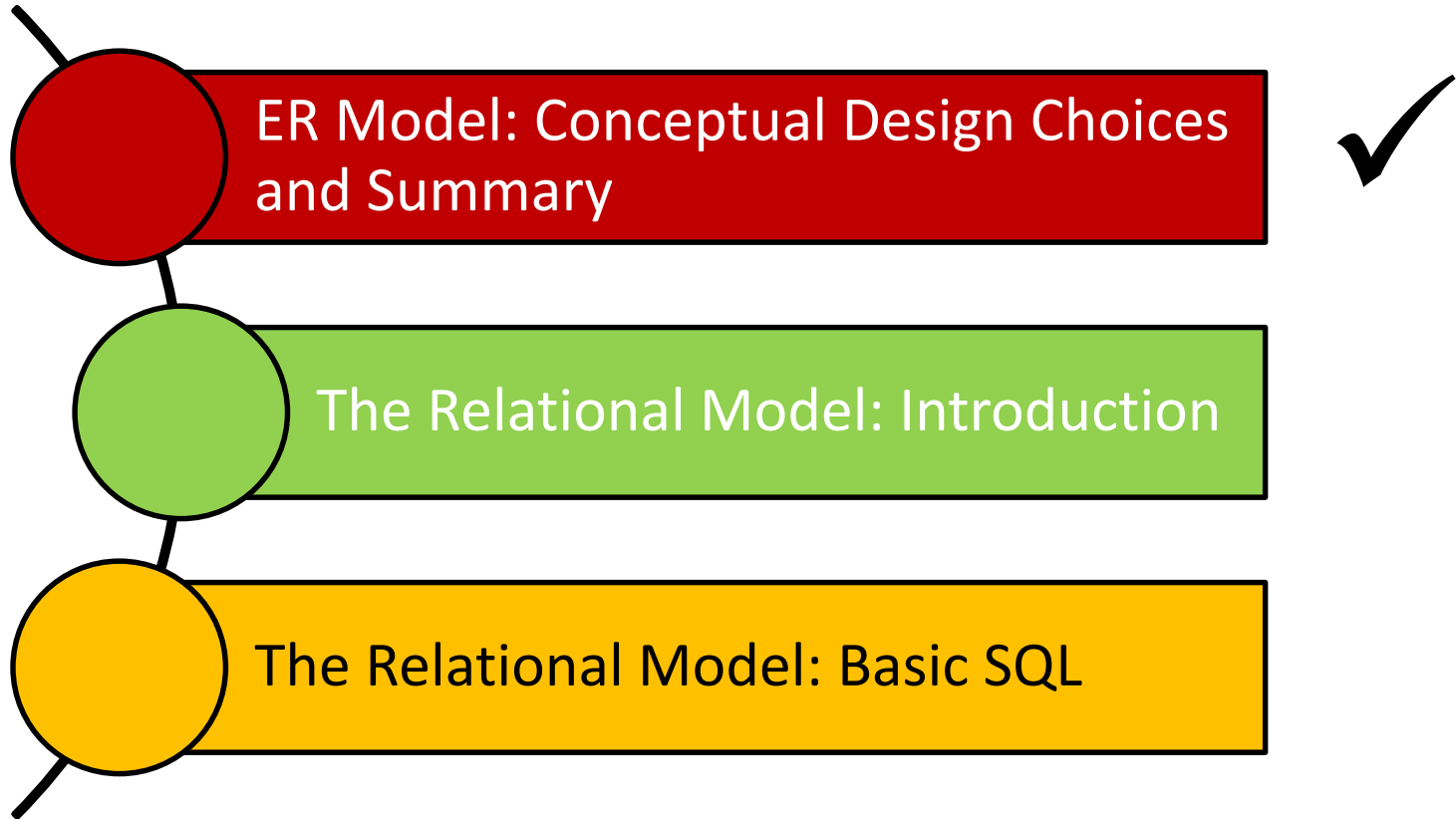
Lecture 3, January 18, 2015

Mohammad Hammoud

# Today...

- **Last Session:**
  - The entity relationship (ER) model
- **Today's Session:**
  - ER model (Cont'd): conceptual design choices
  - The relational model
    - Basic Constructs of the relational model
    - Basic SQL
- **Announcement:**
  - PS1 is due on Jan 22, 2015 (i.e., Thursday) by midnight

# Outline



# Conceptual Design Choices

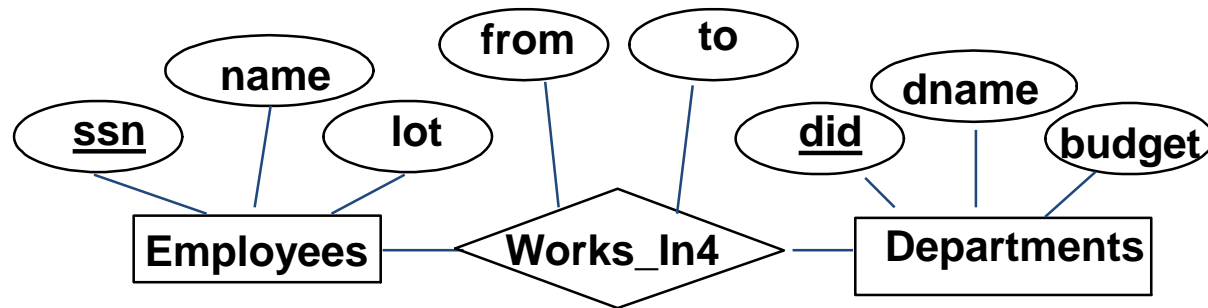
- Should a concept be modeled as an *entity* or an *attribute*?
- Should a concept be modeled as an *entity* or a *relationship*?
- How should we identify relationships?
  - *Binary or ternary*?
  - *Ternary or aggregation*?
- Constraints in the ER Model:
  - A lot of data semantics can (and should) be captured
  - But some constraints cannot be captured in ER diagrams

# Entity vs. Attribute

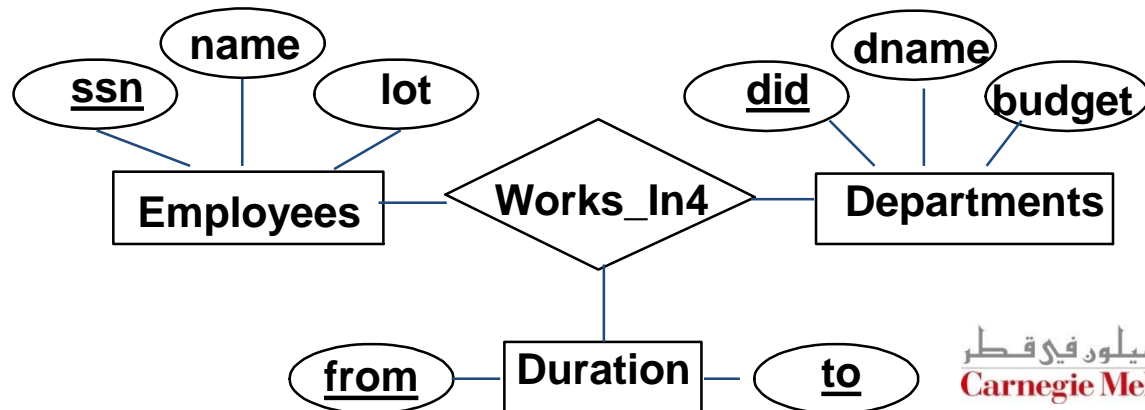
- Should *address* be an attribute of Employees or an entity (connected to Employees by a relationship)?
- This depends upon the use we want to make of address information, and the semantics of the data
  - If we have several addresses per an employee, *address* must be an entity (since attributes cannot be **set-valued**)
  - If the structure (city, street, etc.) is important (e.g., we want to retrieve employees in a given city), *address* must be modeled as an entity

# Entity vs. Attribute (Cont'd)

- Consider the following ER diagram:

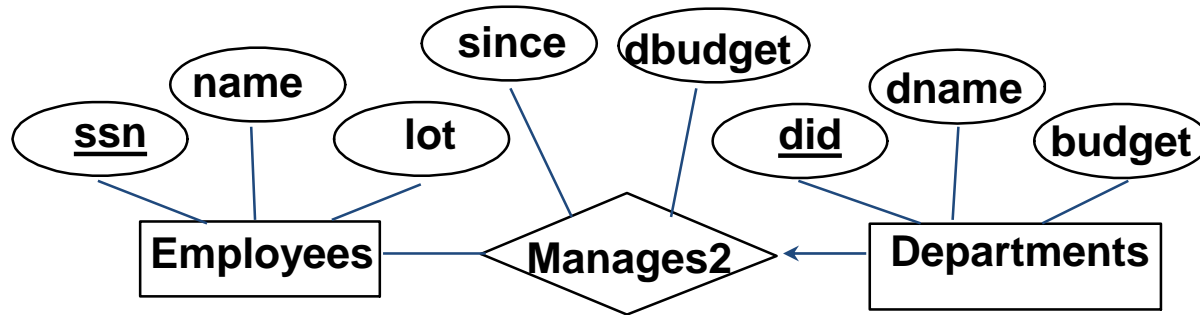


- A problem:** Works\_In4 does not allow an employee to work in a department for two or more periods
- Solution:** introduce “Duration” as a new entity set



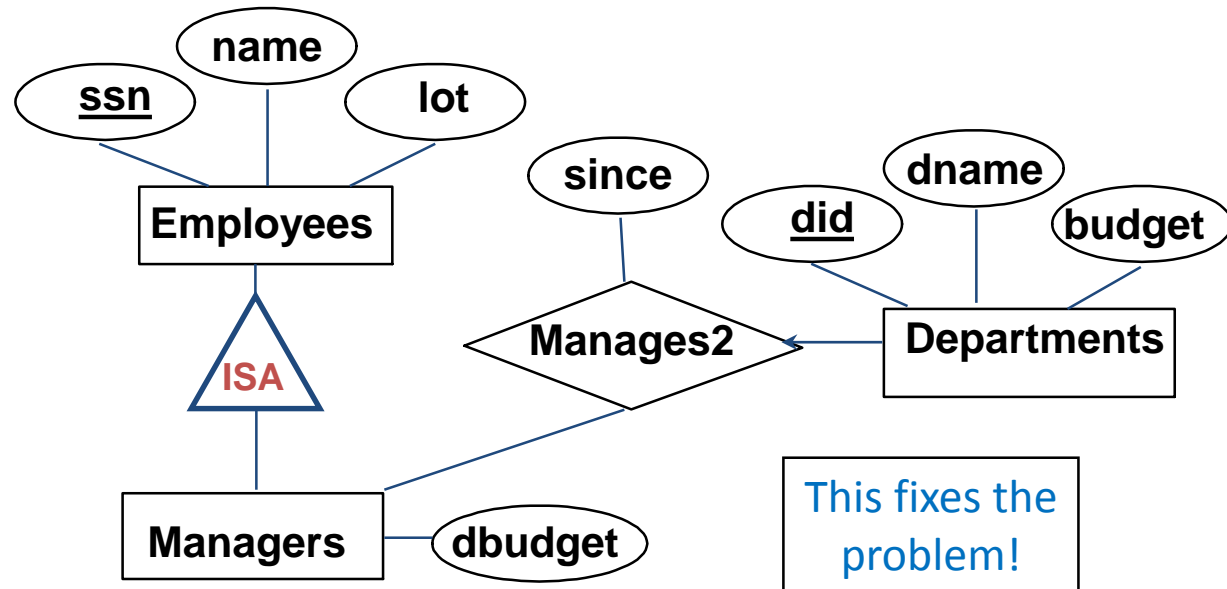
# Entity vs. Relationship

- Consider the following ER diagram whereby a manager gets a separate discretionary budget for each department

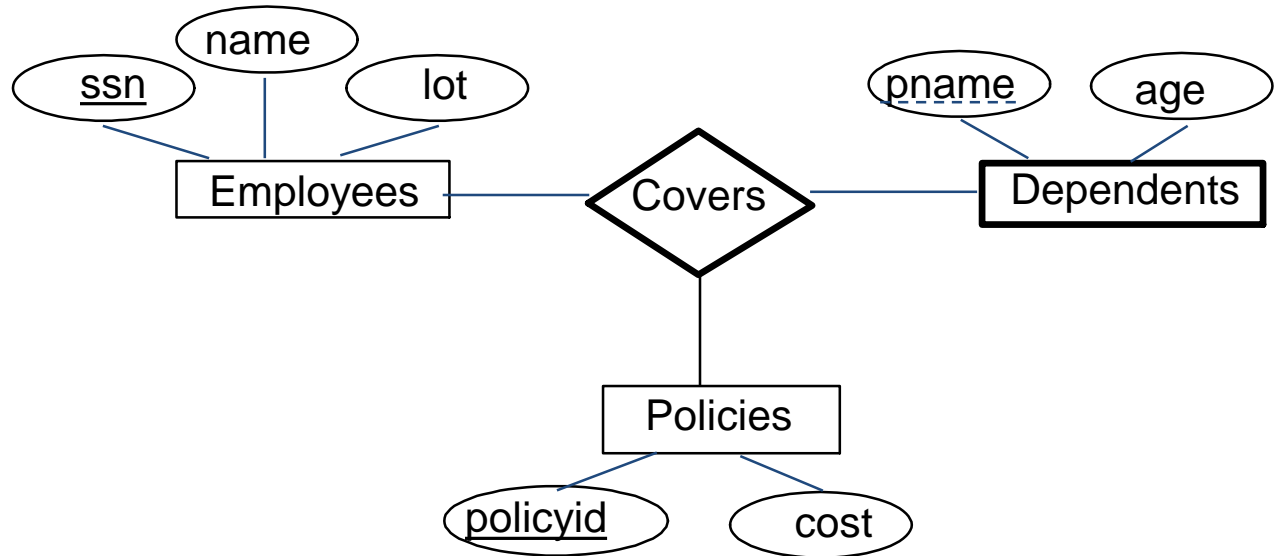


- What if a manager gets a discretionary budget that covers *all* managed departments?

- Redundant data
- Misleading



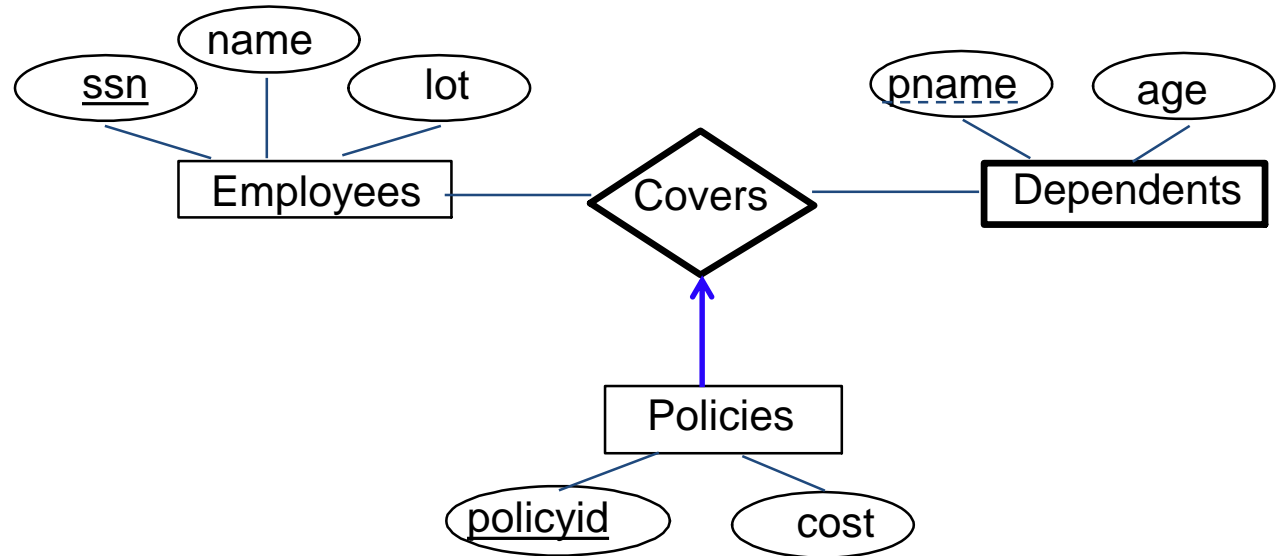
# Binary vs. Ternary Relationships



If each policy is owned by just 1 employee:



# Binary vs. Ternary Relationships

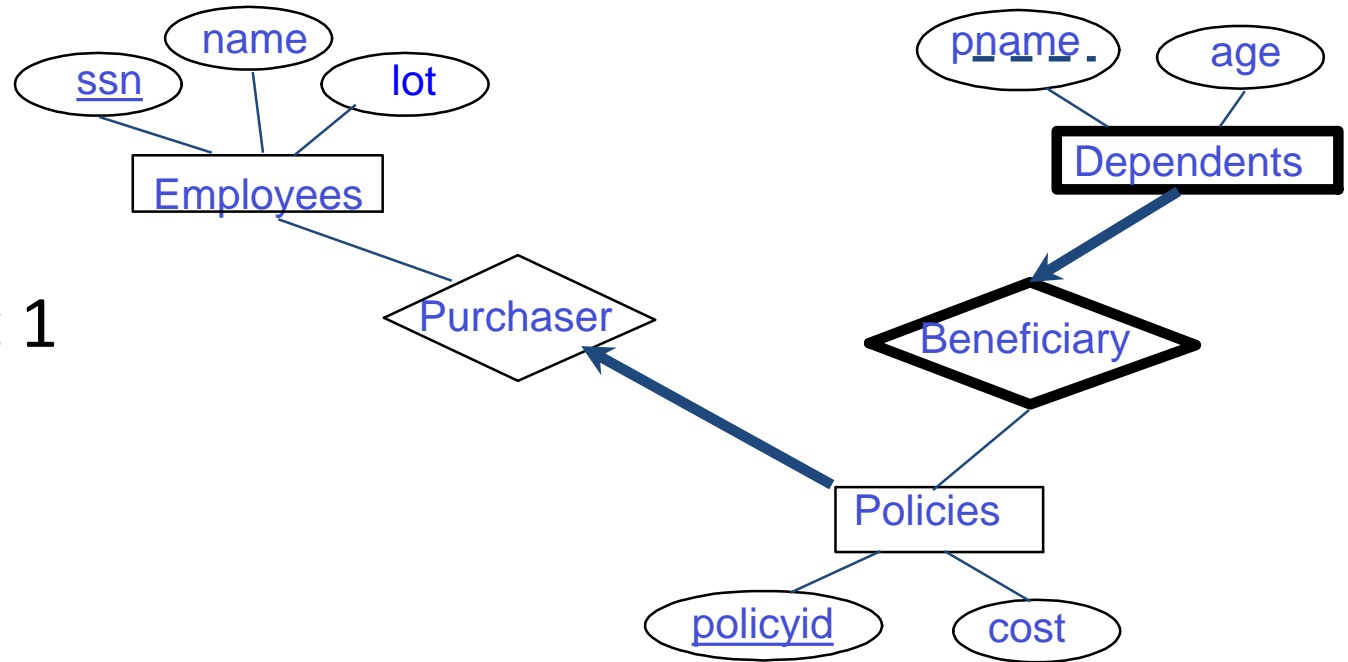


If each policy is owned by just 1 employee:

**Bad design!**

Key constraint on Policies would mean policy can only cover 1 dependent!

# Binary vs. Ternary Relationships



If each policy is owned by just 1 employee:

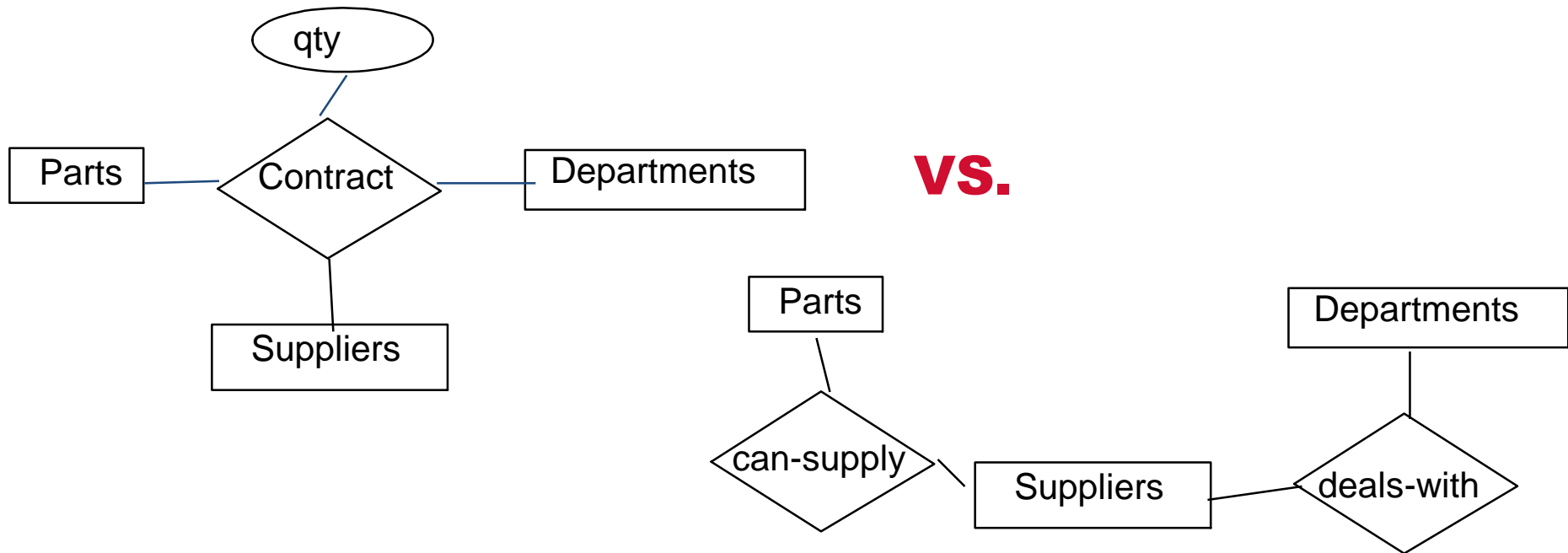
**Better design!**

# Binary vs. Ternary Relationships

- But sometimes ternary relationships cannot be replaced by a set of binary relationships

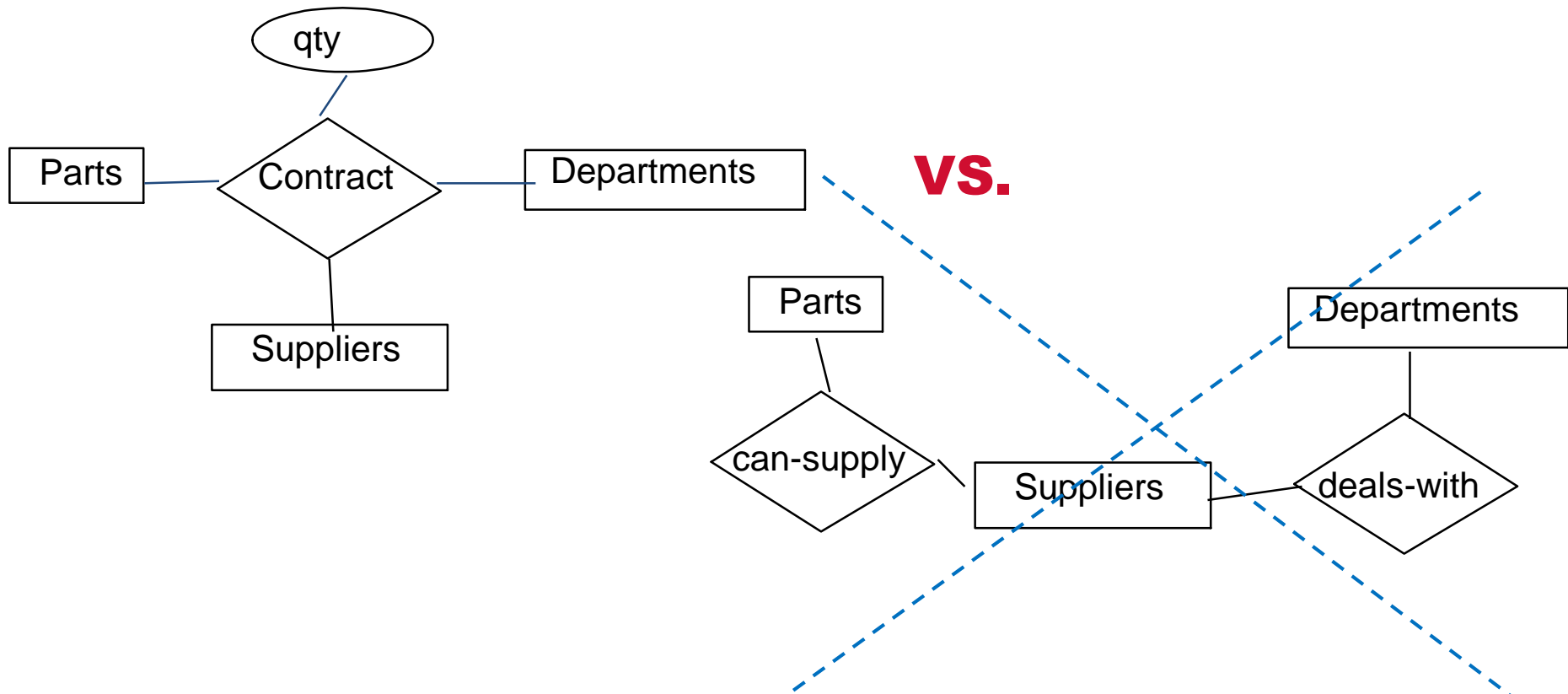
# Binary vs. Ternary Relationships

- But sometimes ternary relationships cannot be replaced by a set of binary relationships



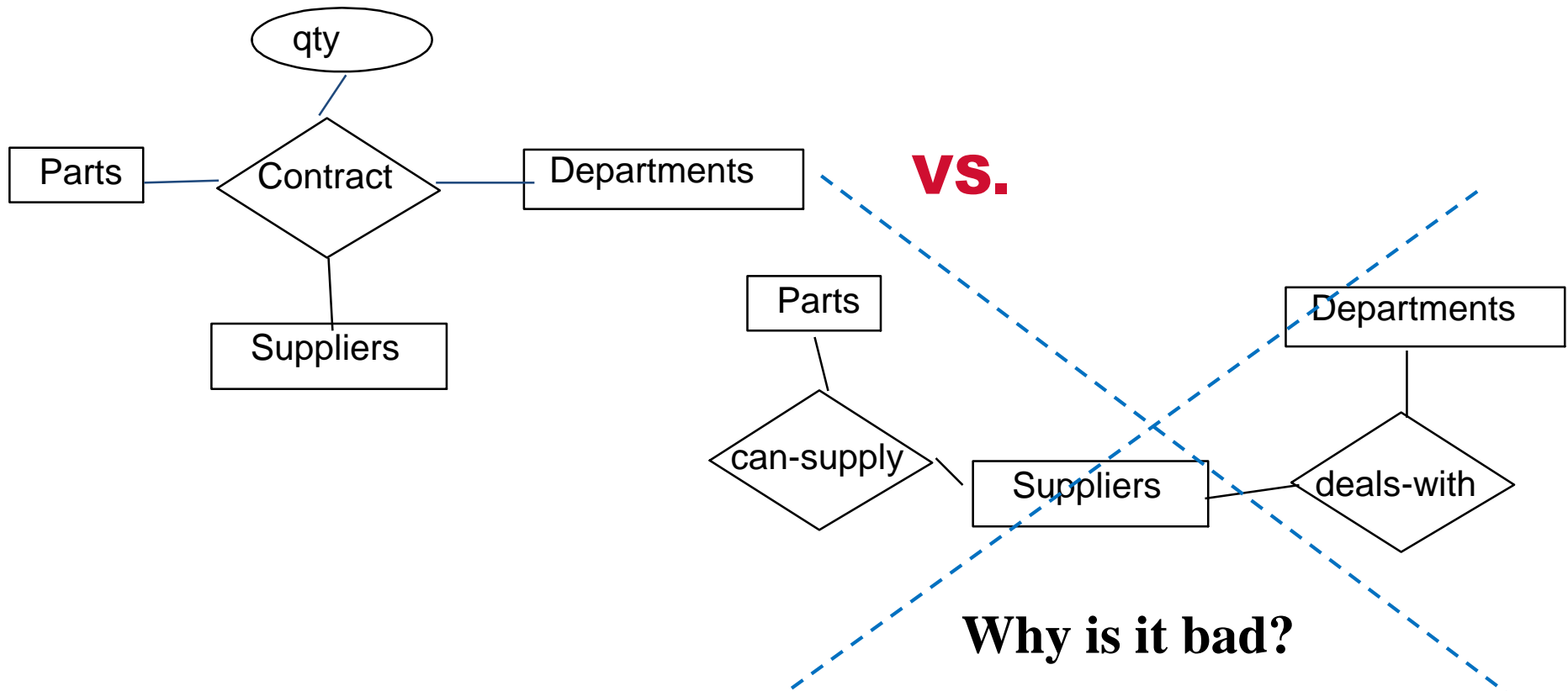
# Binary vs. Ternary Relationships

- But sometimes ternary relationships cannot be replaced by a set of binary relationships



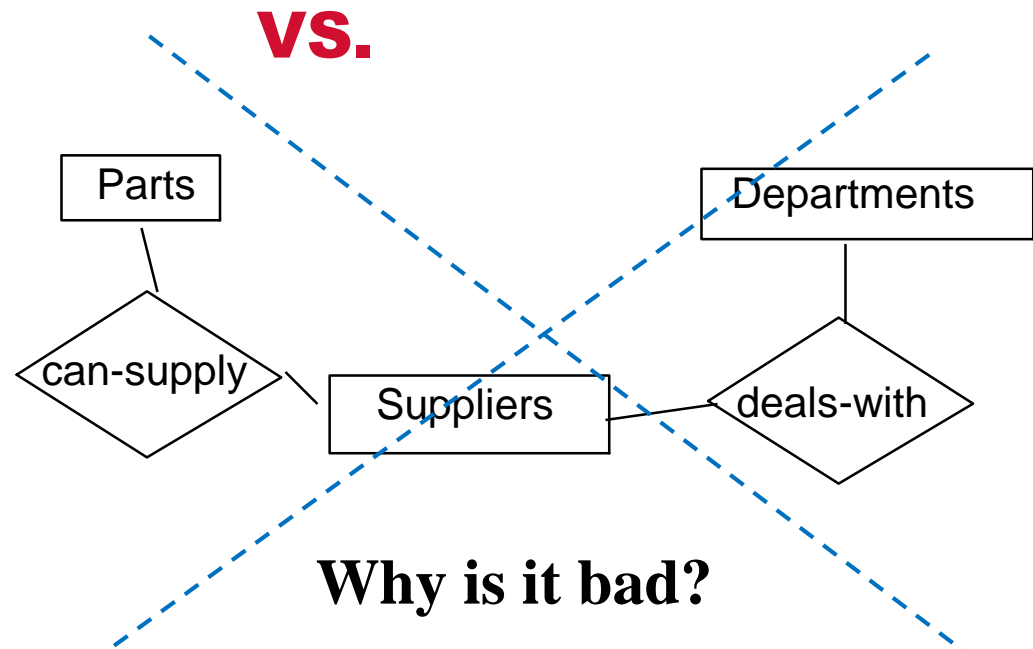
# Binary vs. Ternary Relationships

- But sometimes ternary relationships cannot be replaced by a set of binary relationships



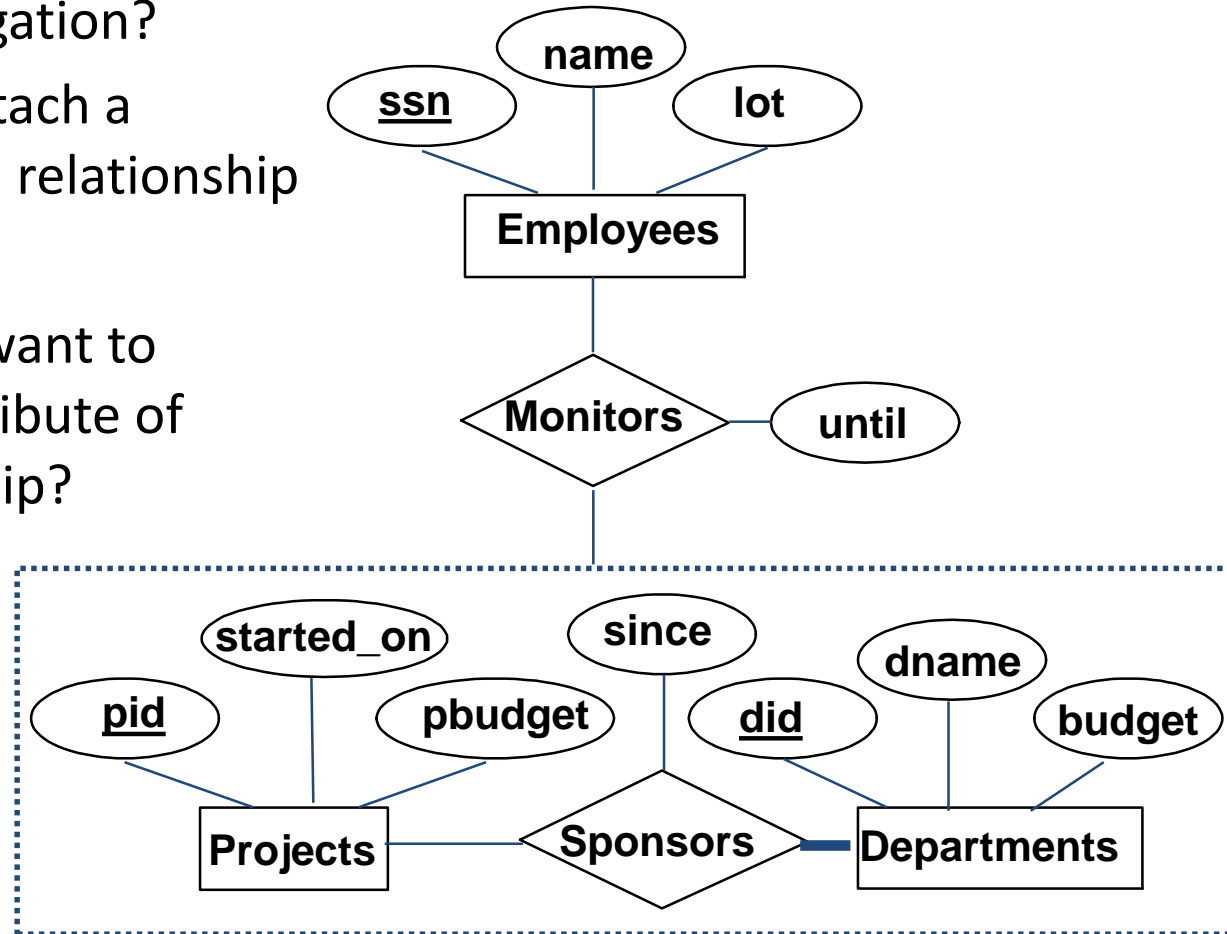
# Binary vs. Ternary Relationships

- But sometimes ternary relationships cannot be replaced by a set of binary relationships
  - $S$  “can-supply”  $P$ ,  
 $D$  “needs”  $P$ , and  $D$  “deals-with”  $S$  do not imply that  $D$  has agreed to buy  $P$  from  $S$
  - How do we record *qty*?



# Ternary vs. Aggregation Relationships

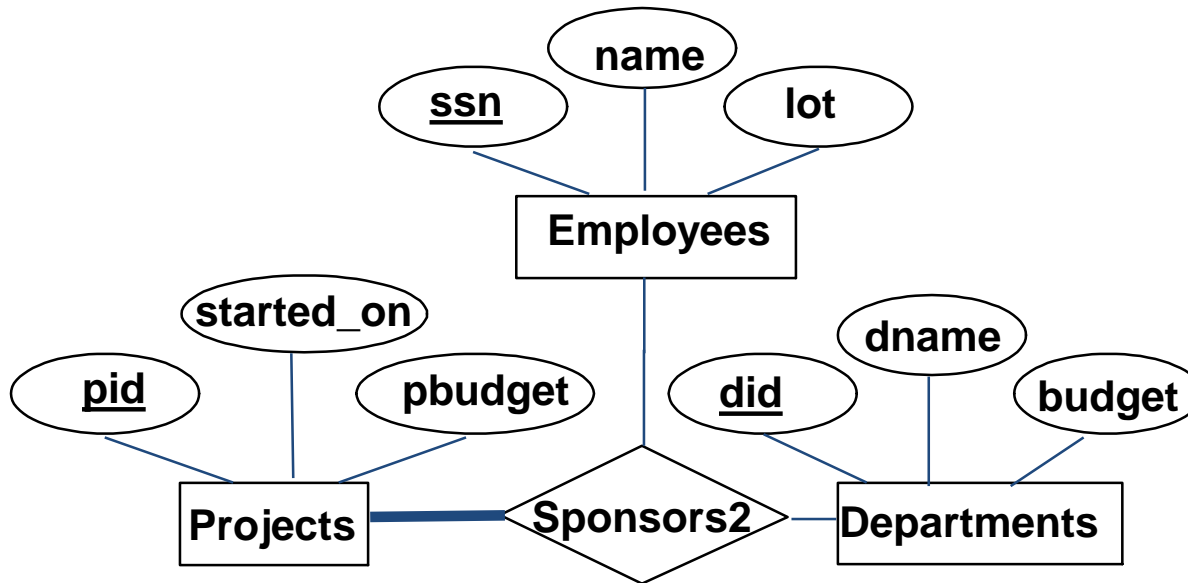
- When to use aggregation?
  - If we want to attach a relationship to a relationship
- What if we do not want to record the *until* attribute of Monitors relationship?





# Ternary vs. Aggregation Relationships (Cont'd)

- We might reasonably use a ternary relationship instead of an aggregation



What if each sponsorship (of a project by a department) is to be monitored by at most one employee?

# ER Model: Summary

- *Conceptual design follows requirements analysis*
  - Yields a high-level description of data to be stored
- The ER model is popular for conceptual design
  - Its constructs are expressive, close to the way people think about their applications
- The basic constructs of the ER model are:
  - *Entities, relationships, and attributes* (of entities and relationships)

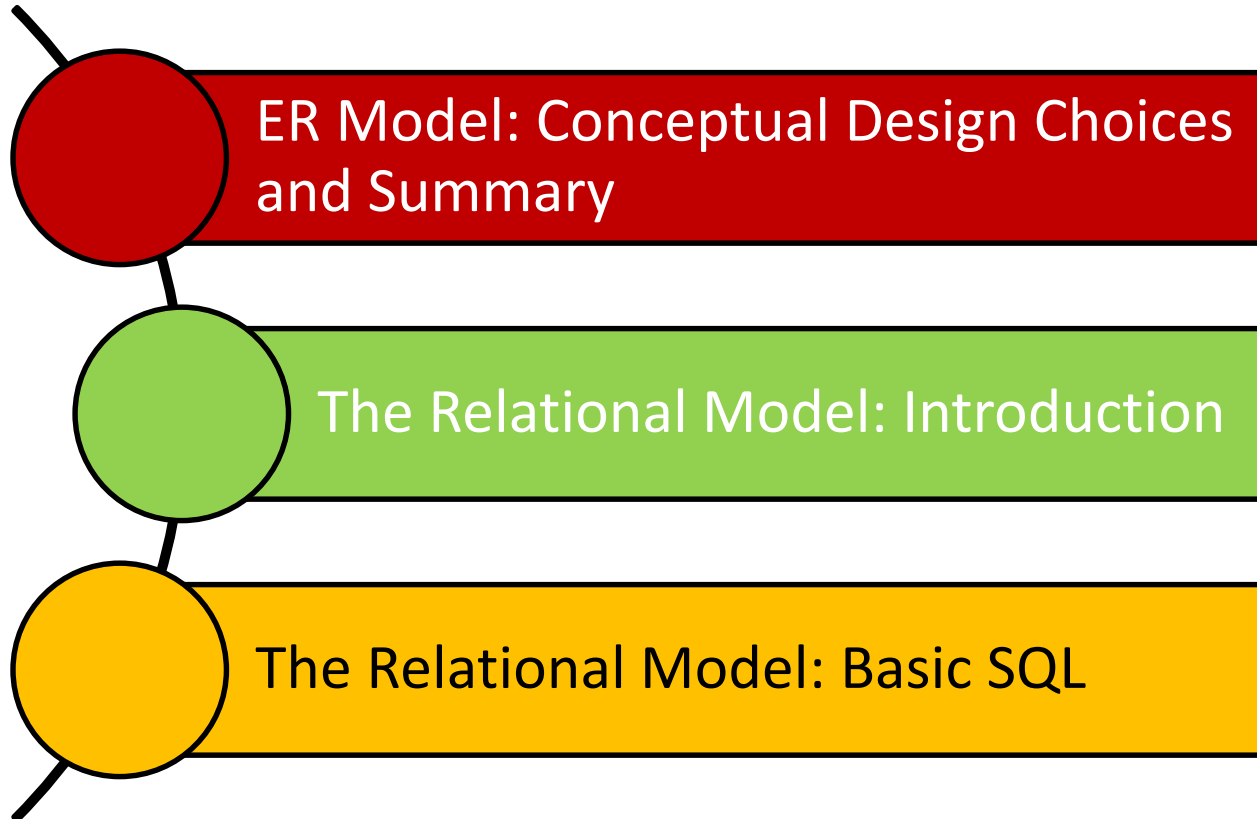
# ER Model: Summary

- Some additional constructs of the ER model are:
  - *Weak entities, ISA hierarchies, and aggregation*
- Several kinds of integrity constraints can be expressed in the ER model
  - *Key constraints, participation constraints, and overlap/covering constraints* for ISA hierarchies
- Note: there are many variations on the ER model

# ER Model: Summary

- ER design is *subjective*
  - There are often many ways to model a given scenario!
  - Analyzing alternatives can be tricky, especially for a large enterprise
- Common choices include:
  - Entity vs. attribute
  - Entity vs. relationship
  - Binary or *n-ary* relationship (e.g., ternary)
  - Whether or not to use ISA hierarchies
  - Whether or not to use aggregation

# Outline



# Why Studying the Relational Model?

- Most widely used model
  - Vendors: IBM/Informix, Microsoft, Oracle, Sybase, etc.
- “Legacy systems” in older models
  - E.g., IBM’s IMS
- Object-Oriented concepts have merged into
  - *An object-relational model*
    - Informix-→IBM DB2, Oracle 8i

# What is the Relational Model?

- The relational model adopts a “tabular” representation
  - A database is a *collection* of one or more **relations**
  - Each relation is a *table* with rows and columns
- What is unique about the relational model as opposed to older data models?
  - Its simple data representation
  - Ease with which complex queries can be expressed

# Basic Constructs

- The main construct in the relational model is the *relation*
  
- A relation consists of:
  1. A **schema** which includes:
    - The relation's name
    - The name of each column
    - The *domain* of each column
  
  2. An **instance** which is a set of tuples
    - Each tuple has the same number of columns as the relation schema



# The Domain Constraints

- A relation schema specifies the *domain* of each column which entails **domain constraints**
- A domain constraint specifies a condition by which each instance of a relation should satisfy
  - The values that appear in a column must be drawn from the domain associated with that column
- Who defines a domain constraint?
  - **DBA**
- Who enforces a domain constraint?
  - **DBMS**

# More Details on the Relational Model

Degree (or arity) = # of fields

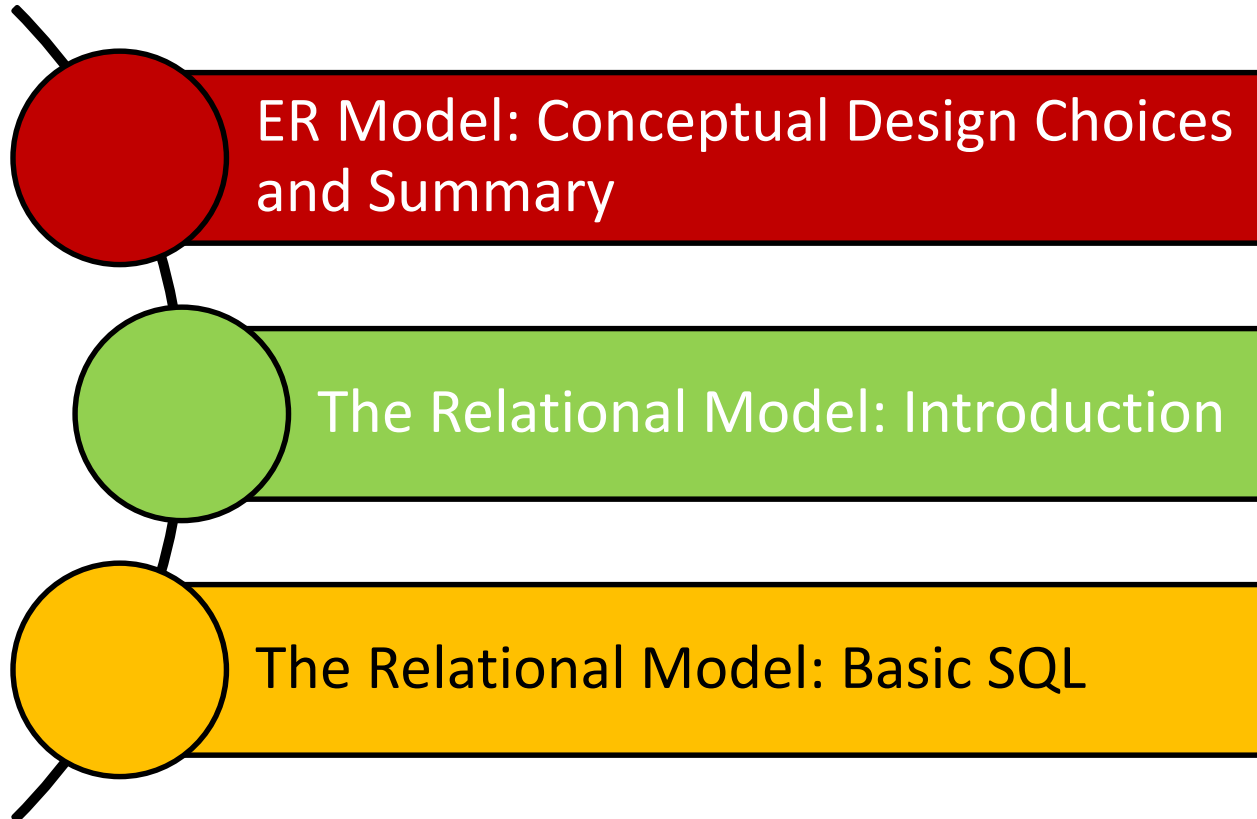
Cardinality = # of tuples

sid	name	login	age	gpa
53666	Jones	jones@cs	18	3.4
53688	Smith	smith@eecs	18	3.2
53650	Smith	smith@math	19	3.8

*An instance of the "Students" relation*

- What is the **relational database schema** (*not* the relation schema)?
  - A collection of schemas for the relations in the database
- What is the **instance of a relational database** (*not* the instance of a relation)?
  - A collection of relation instances

# Outline



# SQL - A Language for Relational DBs

- SQL (a.k.a. “Sequel”) stands for **Structured Query Language**
- SQL was developed by IBM (system R) in the 1970s
- There is a need for a standard since SQL is used by many vendors
- Standards:
  - SQL-86
  - SQL-89 (minor revision)
  - SQL-92 (major revision)
  - SQL-99 (major extensions)
  - SQL-2003 (minor revision)
  - SQL-2011

# DDL and DML

- The SQL language has two main aspects (*there are other aspects which we discuss next week*)
  - Data Definition Language (DDL)
    - Allows creating, modifying, and deleting relations and views
    - Allows specifying constraints
    - Allows administering users, security, etc.
  - Data Manipulation Language (DML)
    - Allows posing *queries* to find tuples that satisfy criteria
    - Allows adding, modifying, and removing tuples

# Creating Relations in SQL

- S1 can be used to create the “Students” relation
- S2 can be used to create the “Enrolled” relation

```
CREATE TABLE Students  
(sid: CHAR(20),  
name: CHAR(20),  
login: CHAR(10),  
age: INTEGER,  
gpa: REAL)
```

S1

```
CREATE TABLE Enrolled  
(sid: CHAR(20),  
cid: CHAR(20),  
grade: CHAR(2))
```

S2

The DBMS enforces domain constraints whenever tuples are added or modified

# Adding and Deleting Tuples

- We can insert a single tuple to the “Students” relation using:

```
INSERT INTO Students (sid, name, login, age, gpa)
VALUES (53688, 'Smith', 'smith@ee', 18, 3.2)
```

- We can delete all tuples from the “Students” relation which satisfy some condition (e.g., name = Smith):

```
DELETE
FROM Students S
WHERE S.name = 'Smith'
```

*Powerful variants of these commands are available; more next week!*

# Querying a Relation

- How can we find all 18-year old students?

sid	name	login	age	gpa
53666	Jones	jones@cs	18	3.4
53688	Smith	smith@eecs	18	3.2
53650	Smith	smith@math	19	3.8

```
SELECT *  
FROM Students S  
WHERE S.age=18
```



sid	name	login	age	gpa
53666	Jones	jones@cs	18	3.4
53688	Smith	smith@ee	18	3.2

- How can we find just names and logins?

```
SELECT S.name, S.login  
FROM Students S  
WHERE S.age=18
```



# Querying Multiple Relations

- What does the following query compute assuming **S** and **E**?

```
SELECT S.name, E.cid
FROM Students S, Enrolled E
WHERE S.sid=E.sid AND E.grade="A"
```

sid	name	login	age	gpa
53666	Jones	jones@cs	18	3.4
53688	Smith	smith@eecs	18	3.2
53650	Smith	smith@math	19	3.8

**S**

sid	cid	grade
53831	Carnatic101	C
53831	Reggae203	B
53650	Topology112	A
53666	History105	B

**E**

We get:

S.name	E.cid
Smith	Topology112

# Destroying and Altering Relations

- How to destroy the relation “Students”?

```
DROP TABLE Students
```

The schema information *and* the tuples are deleted

- How to alter the schema of “Students” in order to add a new field?

```
ALTER TABLE Students  
  ADD COLUMN firstYear: integer
```

Every tuple in the current instance is extended with a *null* value in the new field!

# Integrity Constraints (ICs)

- An **IC** is a condition that must be true for *any* instance of the database (e.g., *domain constraints*)
  - ICs are specified when schemas are defined
  - ICs are *checked* when relations are modified
- A *legal* instance of a relation is one that satisfies all specified ICs
  - DBMS should not allow illegal instances
- If the DBMS checks ICs, stored data is more faithful to real-world meaning
  - Avoids data entry errors, too!

# Keys

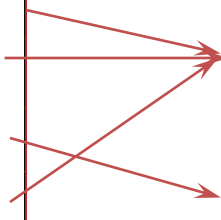
- Keys help associate tuples in different relations
- Keys are one form of integrity constraints (ICs)

Enrolled

sid	cid	grade
53666	15-101	C
53666	18-203	B
53650	15-112	A
53666	15-105	B

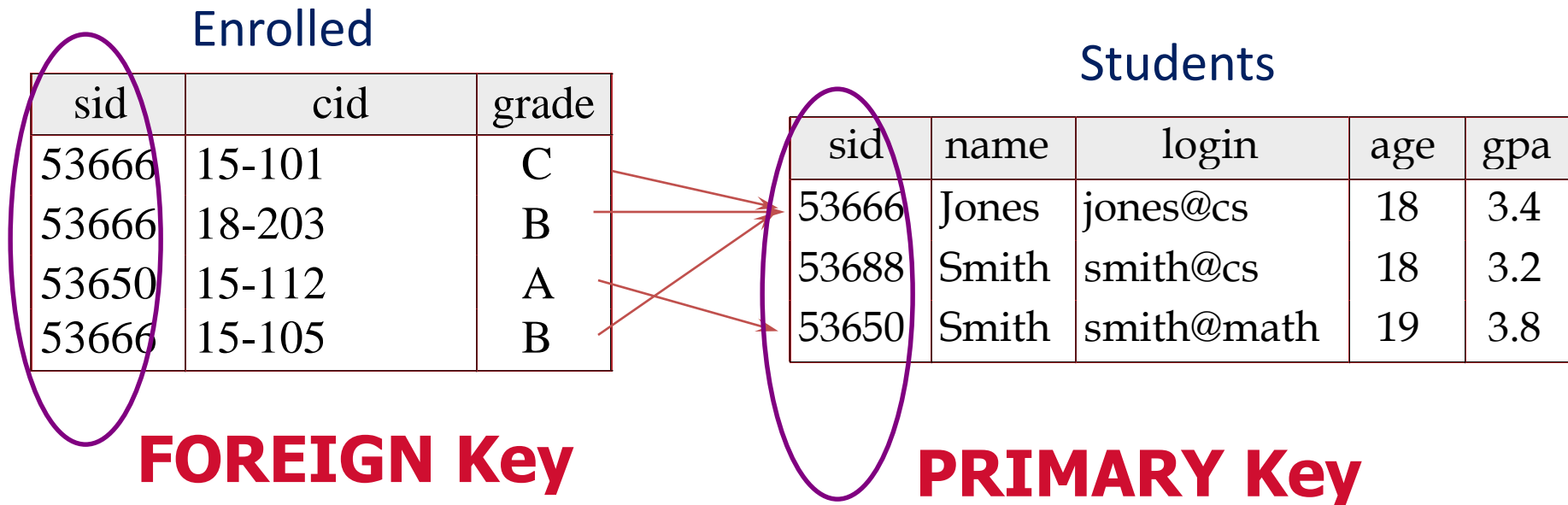
Students

sid	name	login	age	gpa
53666	Jones	jones@cs	18	3.4
53688	Smith	smith@cs	18	3.2
53650	Smith	smith@math	19	3.8



# Keys

- Keys help associate tuples in different relations
- Keys are one form of integrity constraints (ICs)



# Superkey, Primary and Candidate Keys

- A set of fields is a *superkey* if:
  - No two distinct tuples can have same values in *all* key fields
- A set of fields is a *primary key* for a relation if:
  - It is a *minimal* superkey
- What if there is more than one key for a relation?
  - One of the keys is chosen (by DBA) to be the primary key
  - Other keys are called *candidate keys*
- Examples:
  - *sid* is a key for Students (what about *name*?)
  - The set {*sid*, *name*} is a superkey (or a set of fields that contains a key)

# Primary and Candidate Keys in SQL

- Many candidate keys (specified using **UNIQUE**) can be designated and one is chosen as a *primary key*
- Keys must be used carefully!
- “For a given student and course, there is a single grade”

# Primary and Candidate Keys in SQL

- Many candidate keys (specified using **UNIQUE**) can be designated and one is chosen as a *primary key*
- Keys must be used carefully!
- “For a given student and course, there is a single grade”

```
CREATE TABLE Enrolled
(sid CHAR(20)
 cid CHAR(20),
 grade CHAR(2),
PRIMARY KEY (sid,cid))
```

**VS.**

```
CREATE TABLE Enrolled
(sid CHAR(20)
 cid CHAR(20),
 grade CHAR(2),
PRIMARY KEY (sid),
UNIQUE (cid, grade))
```



# Primary and Candidate Keys in SQL

- Many candidate keys (specified using **UNIQUE**) can be designated and one is chosen as a *primary key*
- Keys must be used carefully!
- “For a given student and course, there is a single grade”

```
CREATE TABLE Enrolled
(sid CHAR(20)
 cid CHAR(20),
 grade CHAR(2),
 PRIMARY KEY (sid,cid))
```

vs.

```
CREATE TABLE Enrolled
(sid CHAR(20)
 cid CHAR(20),
 grade CHAR(2),
 PRIMARY KEY (sid),
 UNIQUE (cid, grade))
```

Q: What does this mean?

# Primary and Candidate Keys in SQL

- Many candidate keys (specified using **UNIQUE**) can be designated and one is chosen as a *primary key*
- Keys must be used carefully!
- “For a given student and course, there is a single grade”

```
CREATE TABLE Enrolled  
(sid CHAR(20)  
cid CHAR(20),  
grade CHAR(2),  
PRIMARY KEY (sid,cid))
```

vs.

```
CREATE TABLE Enrolled  
(sid CHAR(20)  
cid CHAR(20),  
grade CHAR(2),  
PRIMARY KEY (sid),  
UNIQUE (cid, grade))
```

“A student can take only one course, and no two students in a course receive the same grade”

# Foreign Keys and Referential Integrity

- A **foreign key** is a set of fields referring to a tuple in another relation
  - It must correspond to the primary key of the other relation
  - It acts like a `logical pointer`
- If all foreign key constraints are enforced, **referential integrity** is said to be achieved (i.e., no dangling references)

# Foreign Keys in SQL

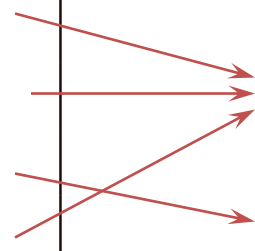
- Example: Only existing students may enroll for courses
  - *sid* is a foreign key referring to Students
  - How can we write this in SQL?

Enrolled

sid	cid	grade
53666	15-101	C
53666	18-203	B
53650	15-112	A
53666	15-105	B

Students

sid	name	login	age	gpa
53666	Jones	jones@cs	18	3.4
53688	Smith	smith@cs	18	3.2
53650	Smith	smith@math	19	3.8



# Foreign Keys in SQL

- Example: Only existing students may enroll for courses

```
CREATE TABLE Enrolled
(sid CHAR(20),cid CHAR(20),grade CHAR(2),
PRIMARY KEY (sid,cid),
FOREIGN KEY (sid) REFERENCES Students )
```

Enrolled

sid	cid	grade
53666	15-101	C
53666	18-203	B
53650	15-112	A
53666	15-105	B

Students

sid	name	login	age	gpa
53666	Jones	jones@cs	18	3.4
53688	Smith	smith@cs	18	3.2
53650	Smith	smith@math	19	3.8

# Enforcing Referential Integrity

- What should be done if an “Enrolled” tuple with a non-existent student id is inserted? (*Reject it!*)
- What should be done if a “Students” tuple is deleted?
  - Disallow its deletion
  - Delete all Enrolled tuples that refer to it
  - Set sid in Enrolled tuples that refer to it to a *default sid*
  - Set sid in Enrolled tuples that refer to it to a special value *null*, denoting ‘unknown’ or ‘inapplicable’
- What if a “Students” tuple is updated?

# Referential Integrity in SQL

- SQL/92 and SQL:1999 support all 4 options on deletes and updates
  - Default is **NO ACTION** (i.e., *delete/update is rejected*)
  - **CASCADE** (also delete all tuples that refer to the deleted tuple)
  - **SET NULL / SET DEFAULT** (sets foreign key value of referencing tuple)

```
CREATE TABLE Enrolled
(sid CHAR(20),
cid CHAR(20),
grade CHAR(2),
PRIMARY KEY (sid,cid),
FOREIGN KEY (sid)
REFERENCES Students
ON DELETE CASCADE
ON UPDATE SET DEFAULT )
```

What does this mean?

# Where do ICs Come From?

- ICs are based upon the semantics of the real-world enterprise that is being described in the database relations
- We can check a database instance to see if an IC is violated, but we can **NEVER** infer that an IC is true by looking at an instance
  - An IC is a statement about all possible instances!
  - From the “Students” relation, we know *name* is not a key, but the assertion that *sid* is a key is given to us
- Key and foreign key ICs are the most common; more general ICs are supported too



# Views

- A **view** is a table whose rows are not explicitly stored but computed as needed

```
CREATE VIEW YoungActiveStudents (name, grade)
AS SELECT S.name, E.grade
FROM Students S, Enrolled E
WHERE S.sid = E.sid and S.age<21
```

- Views can be queried
  - Querying YoungActiveStudents would necessitate computing it first then applying the query on the result as being like any other relation
- Views can be dropped using the **DROP VIEW** command
  - How to handle **DROP TABLE** if there's a view on the table?
    - DROP TABLE command has options to let the user specify this

# Views and Security

- Views can be used to present necessary information, while hiding details in underlying relation(s)
  - If the schema of an old relation is *changed*, a view can be defined to represent the old schema
    - This allows applications to *transparently* assume the old schema
- Views can be defined to give a group of users access to just the information they are allowed to see
  - E.g., we can define a view that allows students to see other students' names and ages, but not GPAs (also students can be prevented from accessing the underlying “Students” relation)

# Views and Security

- Views can be used to present necessary information, while hiding details in underlying relation(s)
  - If the schema of an old relation is *changed*, a view can be defined to represent the old schema
    - This allows applications to *transparently* assume the old schema
- Views can be defined to give a group of users access to just the information they are allowed to see
  - E.g., we can define a view that allows students to see other students' names and ages, but not GPAs (also students can be prevented from accessing the underlying “Students” relation)

# Views and Security

- Views can be used to present necessary information, while hiding details in underlying relation(s)
  - If the schema of an old relation is *changed*, a view can be defined to represent the old schema
    - This allows applications to *transparently* assume the old schema
- Views can be defined to give a group of users access to just the information they are allowed to see
  - E.g., we can define a view that allows students to see other students' names and ages, but not GPAs (also students can be prevented from accessing the underlying "Students" relation)

## Logical Data Independence!

## Security!

# Next Class

## The Relational Model (Cont'd) and Relational Algebra